

SCHOOLYARD STEWARDSHIP

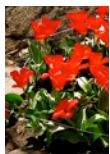
bulletin 3.0 (RM draft 9.19.08)

seasonal maintenance opportunities

Spring, March–May

Trim back Urban Meadow plants in late March / April before new growth emerges. Compost.

Watch for new growth. Record emergence of shoots in **OC Log Book**. Watch for tulips.



Identify and pull weeds when they first start growing, most easily done at this time of year, while soil is moist and roots are short, and before they make seeds.

Plan and prepare student planting beds, mixing in one to three inches of compost from bin. Return uncomposted stalks back to compost for another cycle.

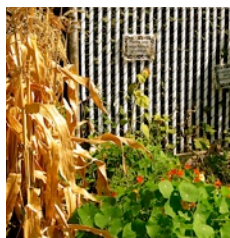
Summer, June–August

Record observations at the end of the school year through sketches and writing. Add to OC Log Book.

Mulch planting beds with compost or bark mulch to nurture soil, conserve water and control weeds.

Mulch walking areas and tree beds with large size wood chips, to reduce weeds and provide food for worms and bugs.

Vegetable planting and tending in designated area by summer school program. Establish an as-needed watering relationship with parents and neighbors.



Fall, September–November

Record observations at beginning of the school year through sketches and writing. Begin Fall OC Log Book.

Pull new weeds in beds when ground is moist and before they develop deep roots.

Clear unwanted growth and compost it for spring. Keep compost pile as moist as a wrung-out sponge. **Check** compost pile temperature.



Mulch planting beds with leaves or compost to reduce winter weeds and feed the soil. Prepare new planting beds by mixing in compost, top dress with bark mulch.

Prepare for spring bulbs:

Order in September. **Plant** in October and early November. Select tulips for Journey North Project. Select early spring bulbs - Crocus & Narcissus.

Winter, December–February

Tuck in garden beds for winter - rake winter leaf mulch back onto beds if winds blow it off of. Remove any remaining weeds to prevent weeds going to seed. Remove blown trash, rake gravel as needed, etc.

Observe & Document winter conditions and changes with sketches and writing. Add to Log Book & display.

Prune woody trees and shrubs when dormant during December - February. (after schoolyard staff review)